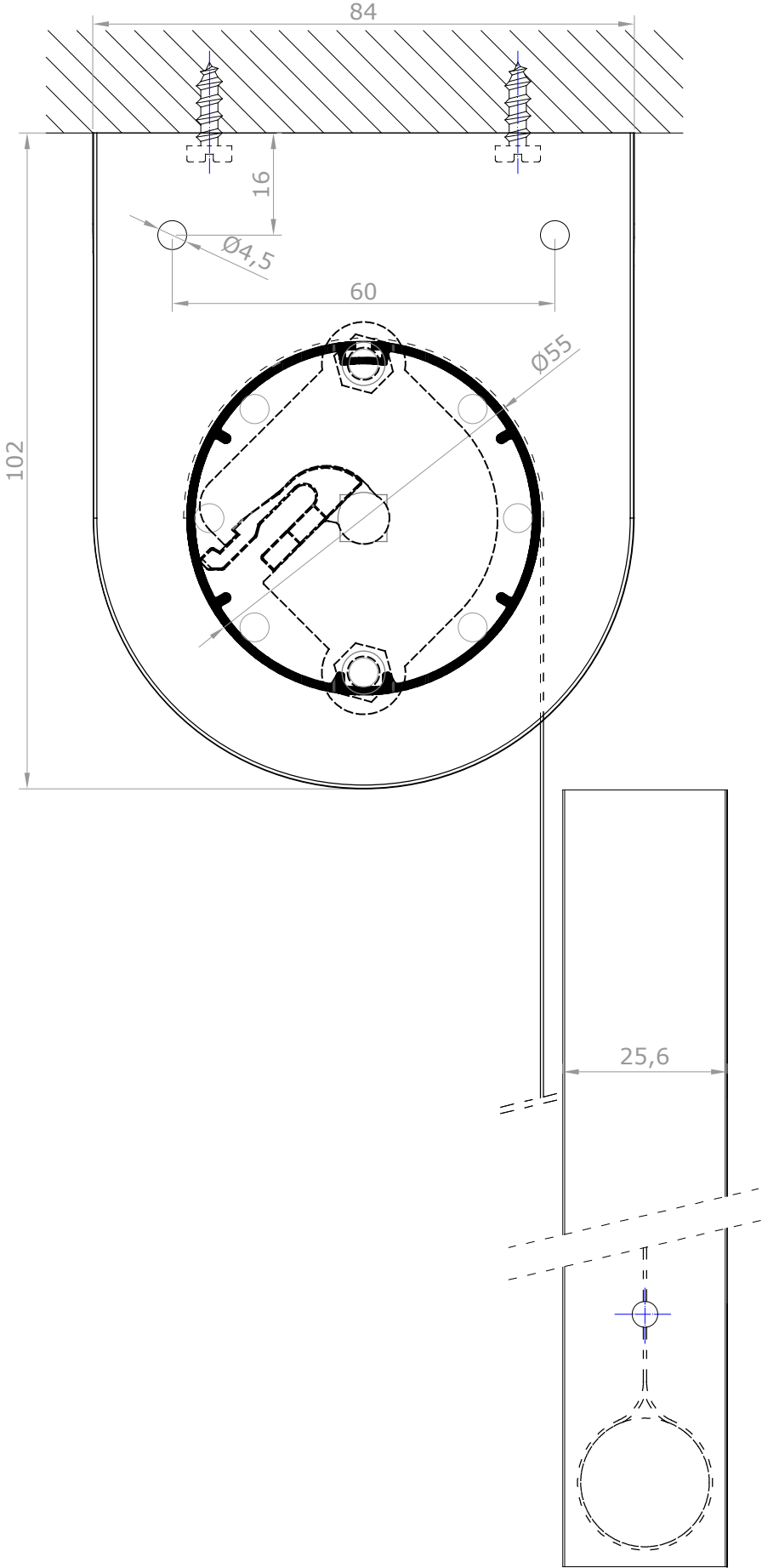
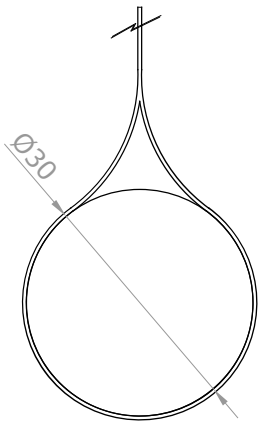
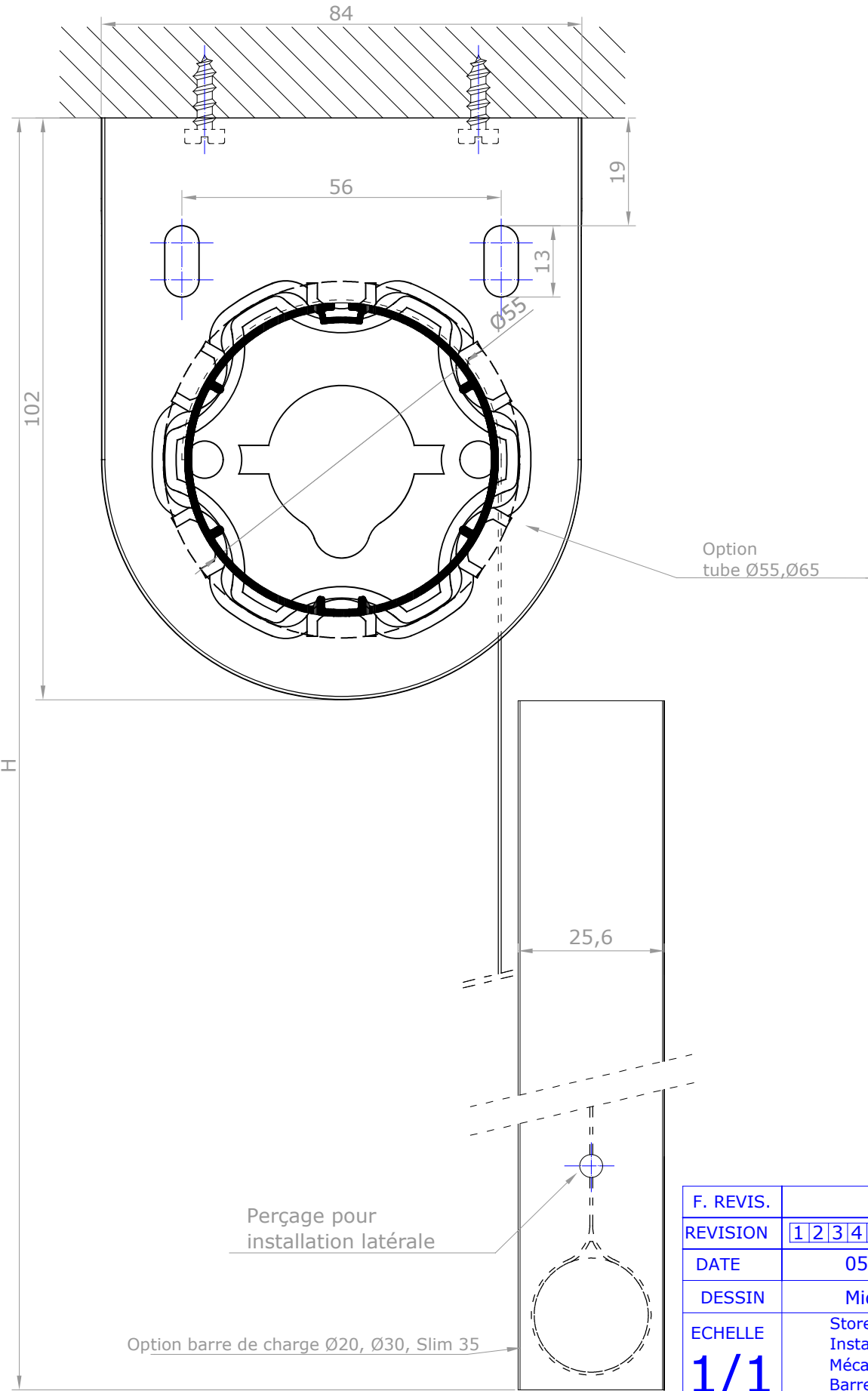


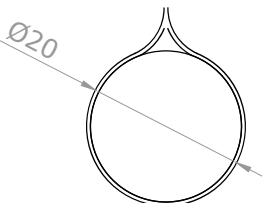
APPUI



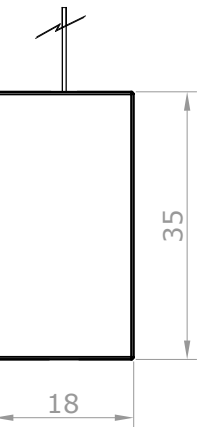
CÔTÉ COMMANDES



Détail 1:1 barre de charge occulte Ø30



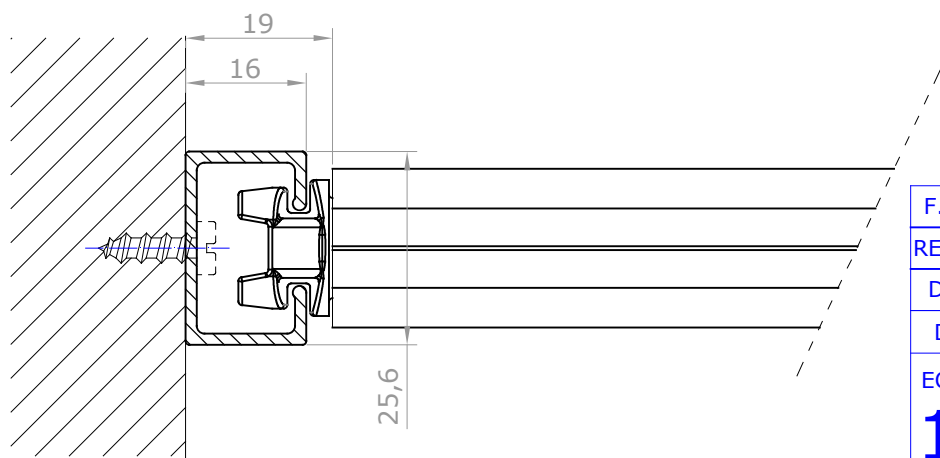
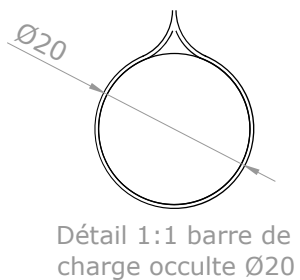
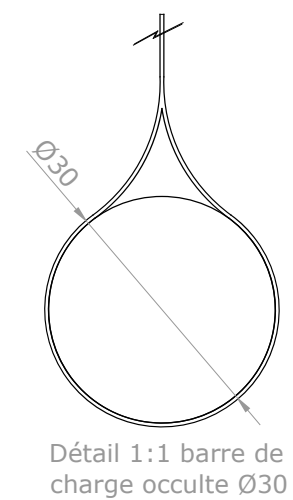
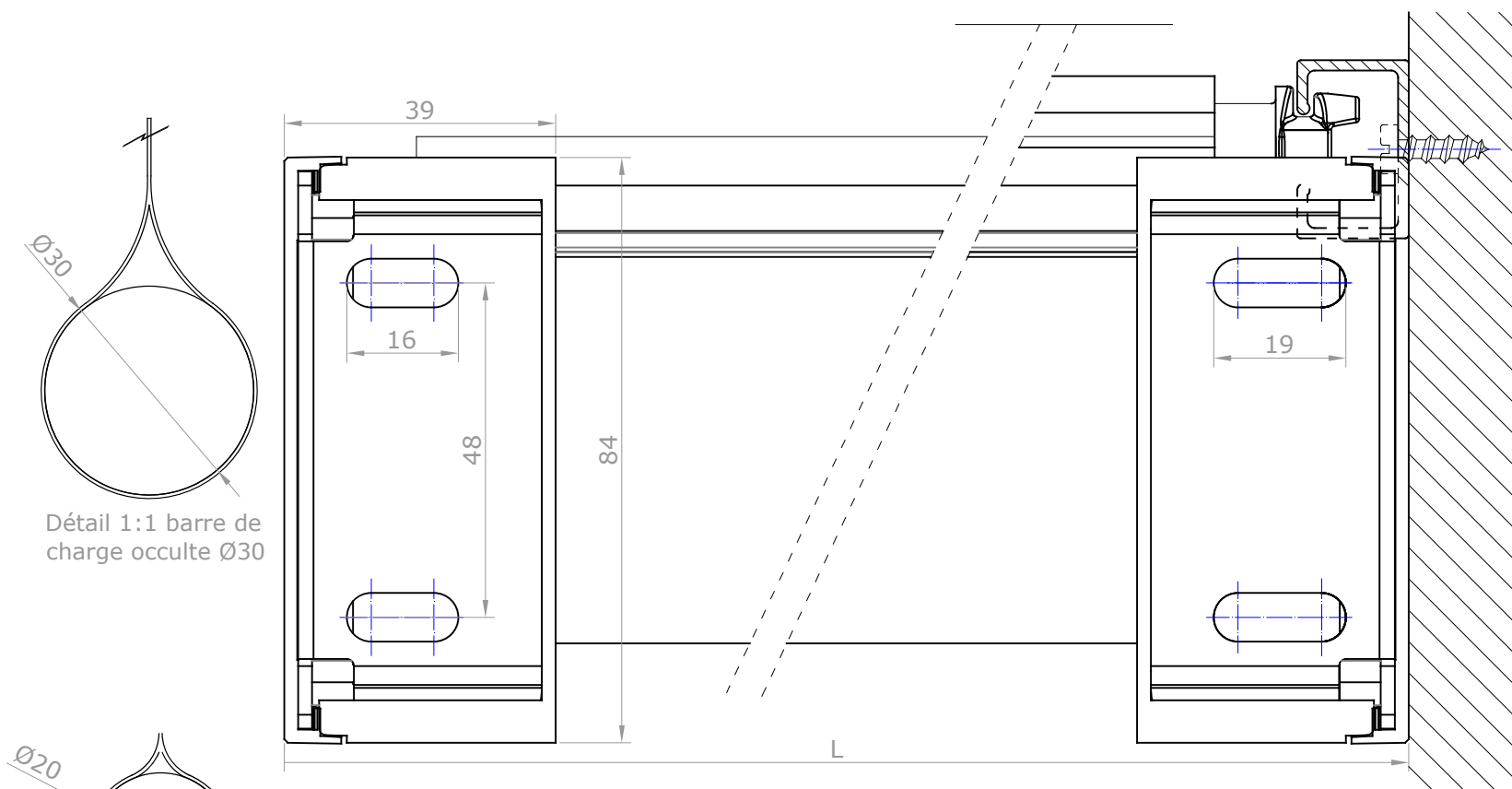
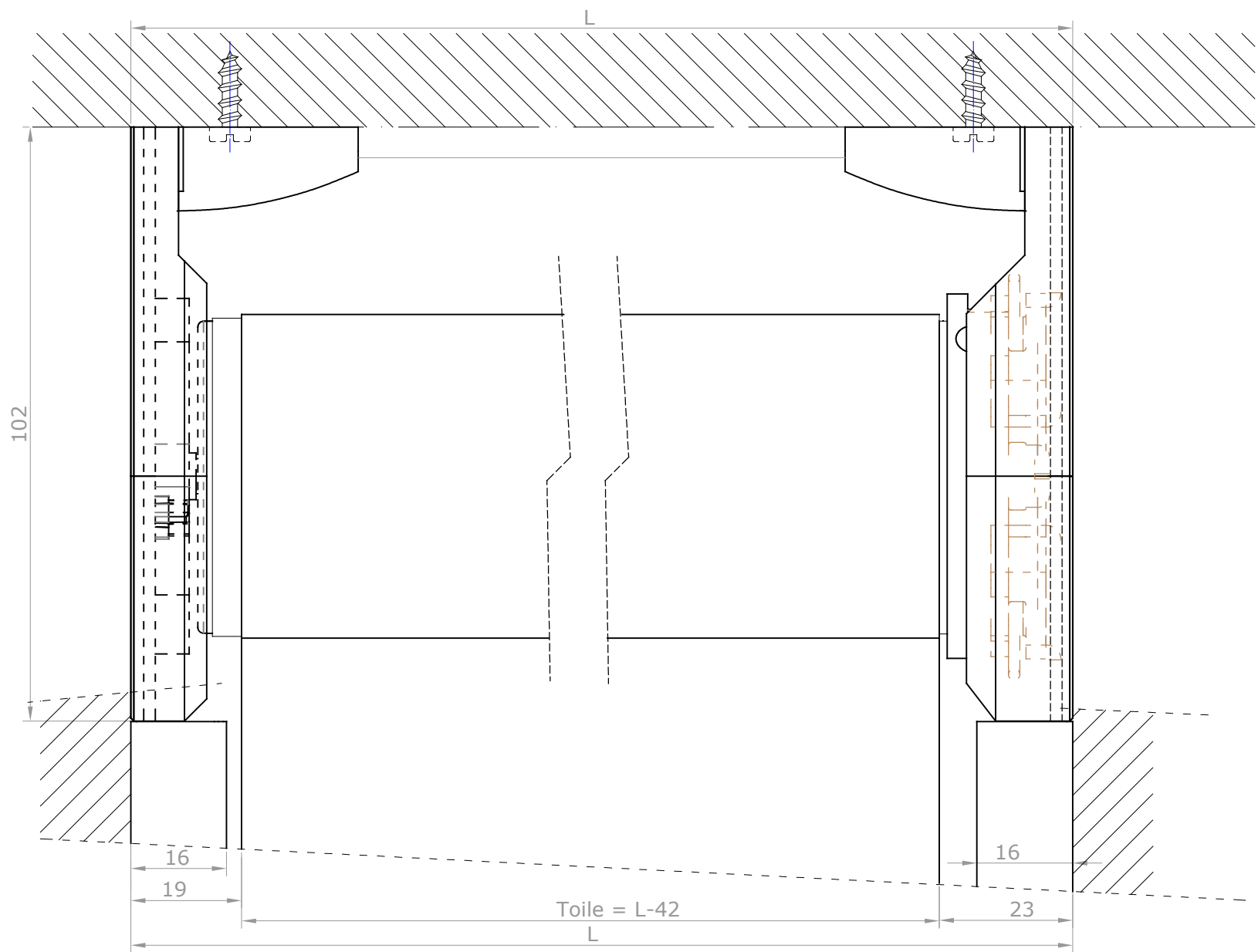
Détail 1:1 barre de charge occulte Ø20



Détail 1:1 barre de charge apparente Slim 35

F. REVIS.		BANDALUX	
REVISION	1 2 3 4 5 6 7 8 9		
DATE	05-02-2018	PLAN N°	
DESSIN	Miquel P.	FORMAT	A-3
ECHELLE	Store enrouleur Premium Plus II moteur coulisses U-201 Installation: pose au plafond, installation latérale Mécanisme: moteur 50 Barre de charge: Occulte de Ø20mm Tube Ø55mm		

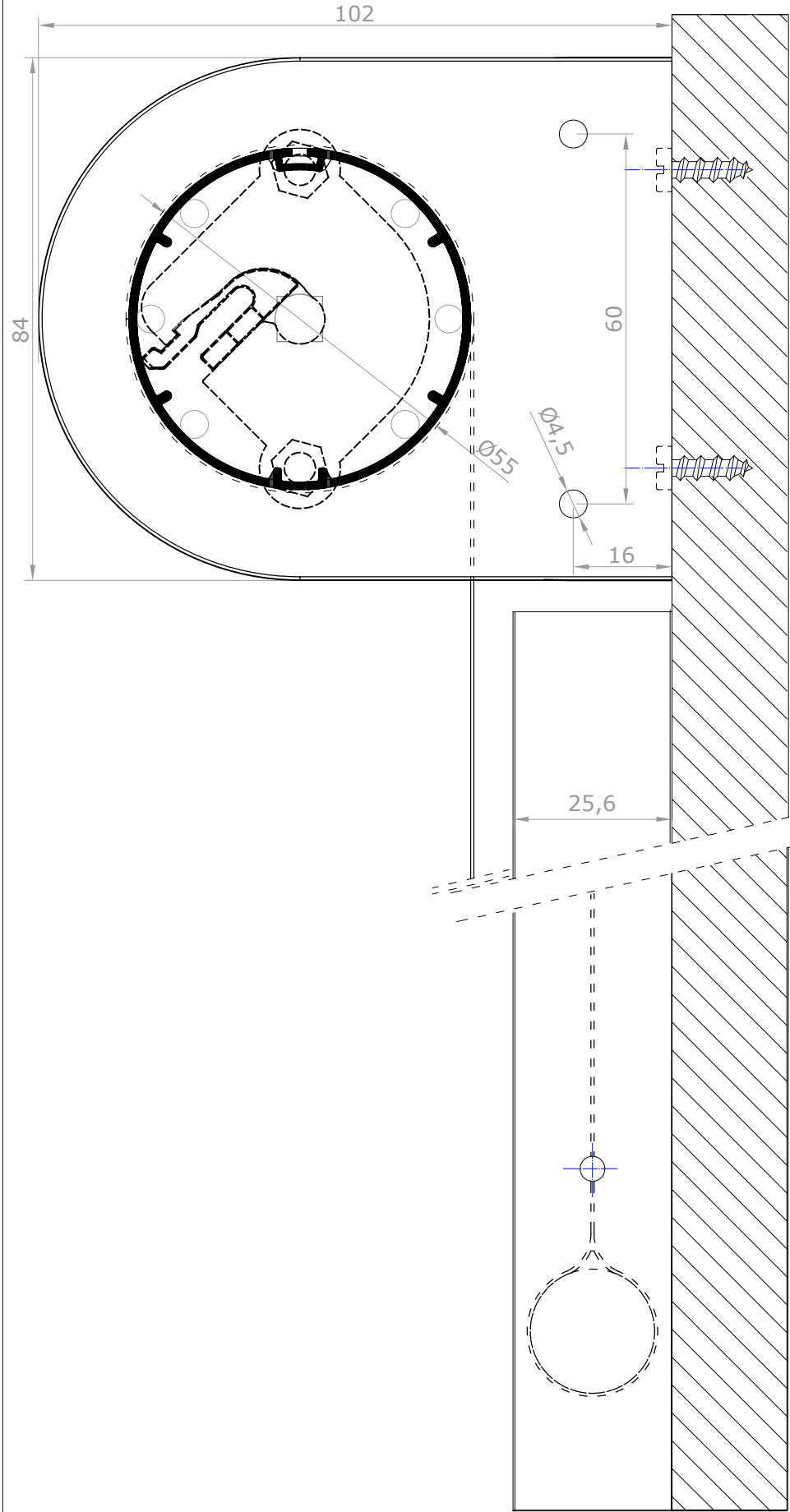
1/1



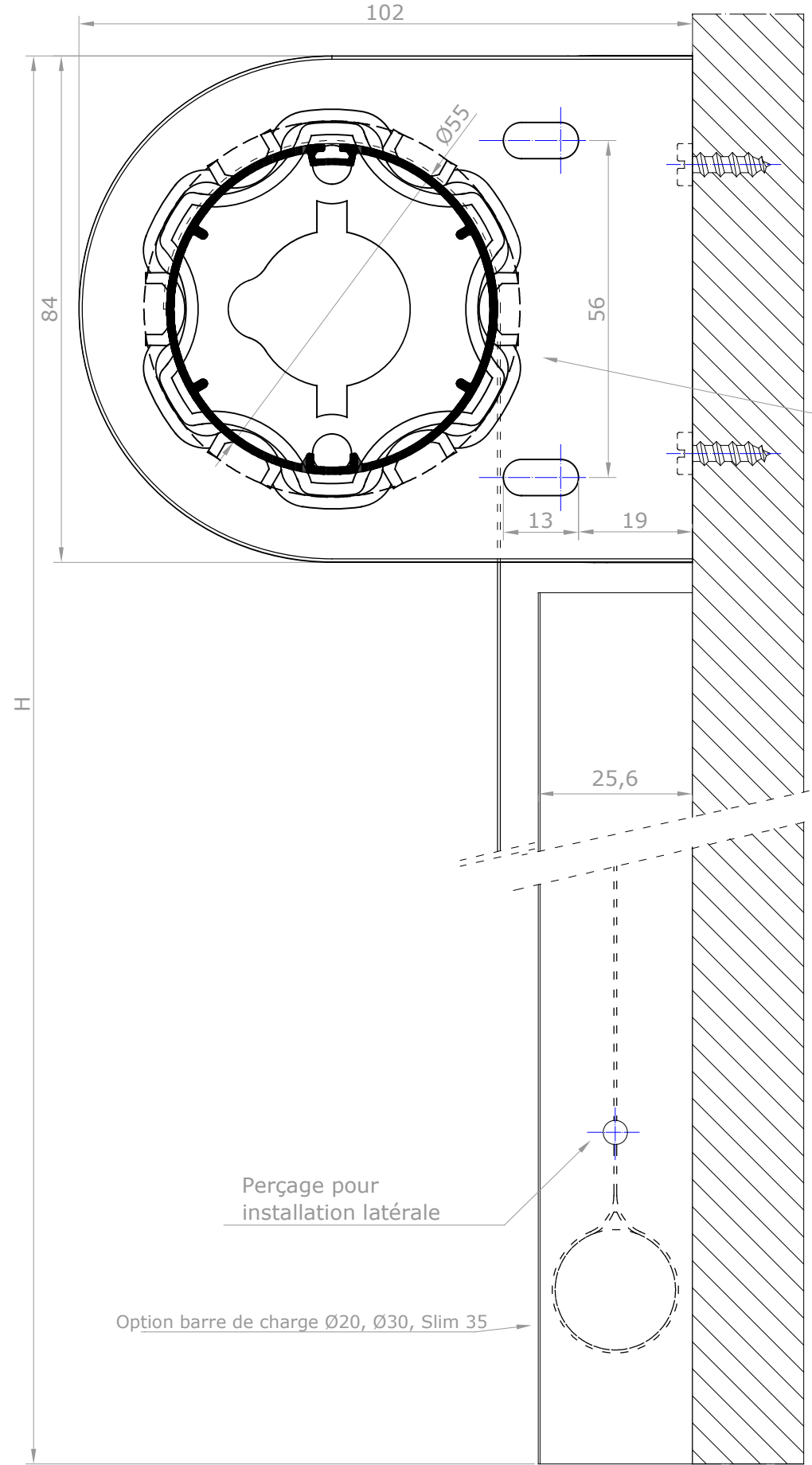
F. REVIS.		BANDALUX	
REVISION	123456789		
DATE	05-02-2018	PLAN N°	
DESSIN	Miquel P.	FORMAT	A-3
ECHELLE	Store enrouleur Premium Plus II moteur coulisses U-201 Installation: pose au plafond, installation latérale Mécanisme: chaînette moteur 50 Barre de charge: Occulte de Ø20mm Tube Ø55mm		

1/1

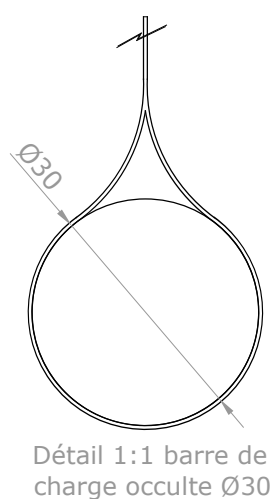
APPUI



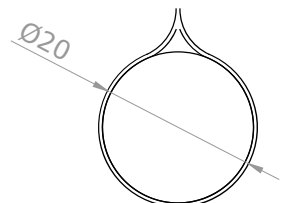
CÔTÉ COMMANDES



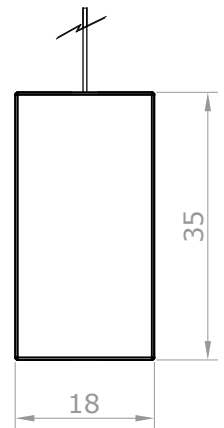
Option
tube Ø55,Ø65



Détail 1:1 barre de charge occulte Ø30



Détail 1:1 barre de charge occulte Ø20

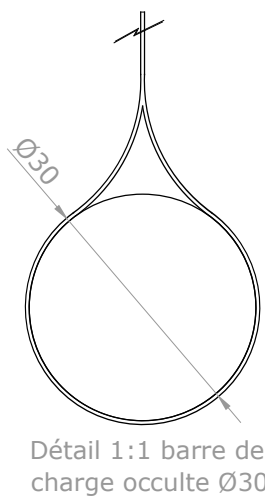
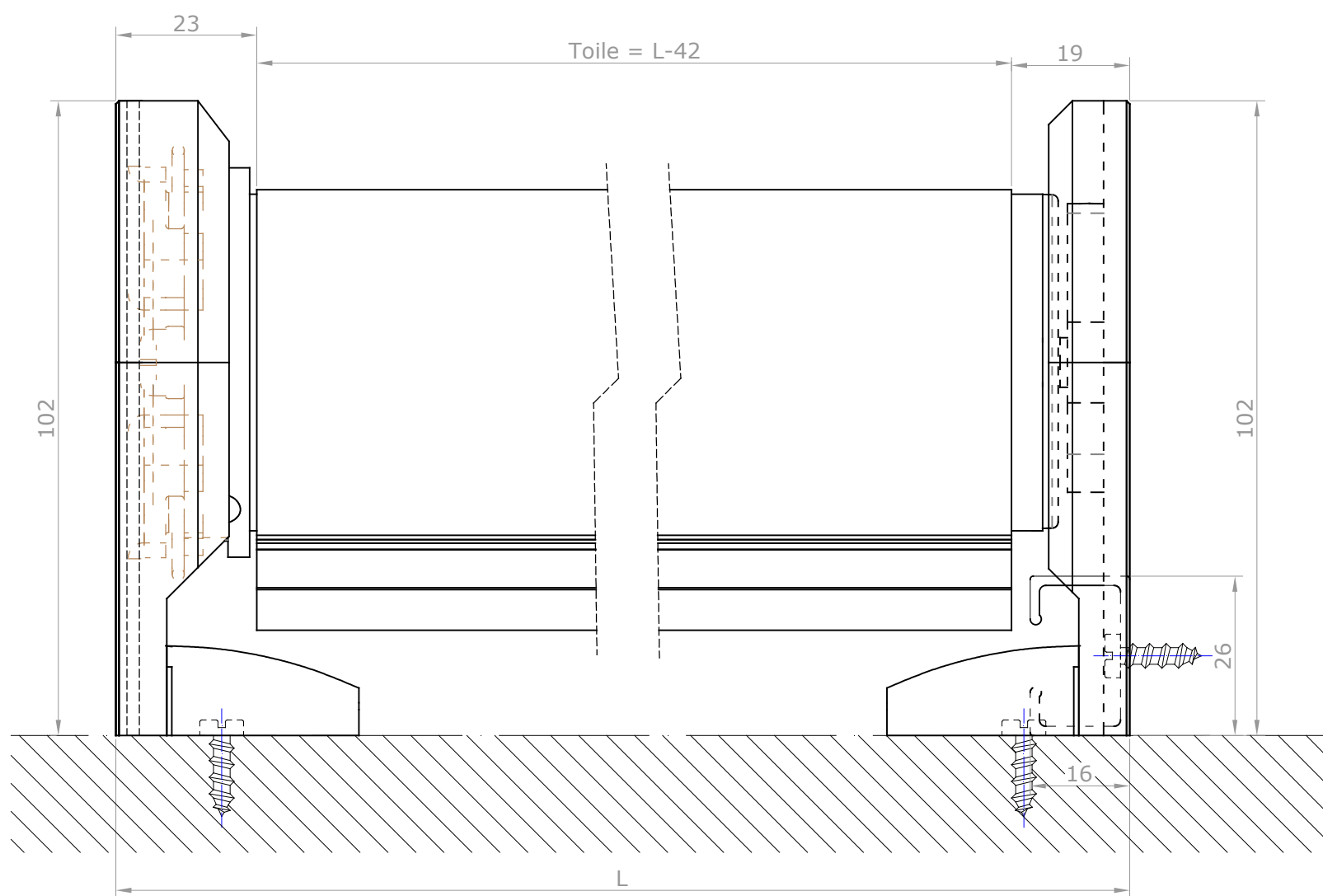
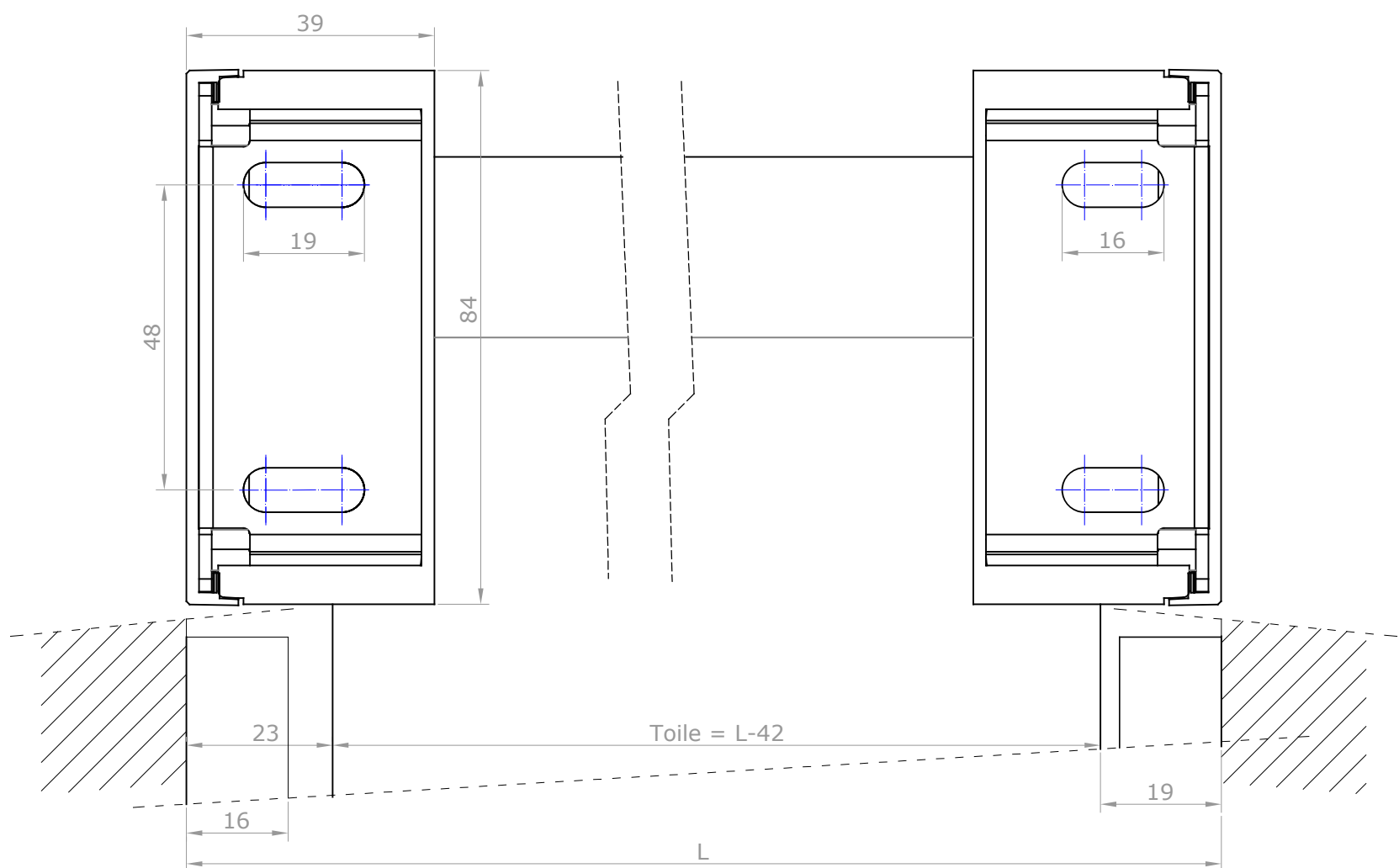


Détail 1:1 barre de charge apparente Slim 35

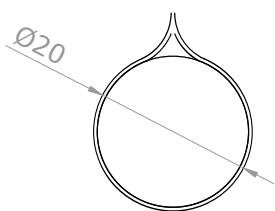
Perçage pour
installation latérale

Option barre de charge Ø20, Ø30, Slim 35

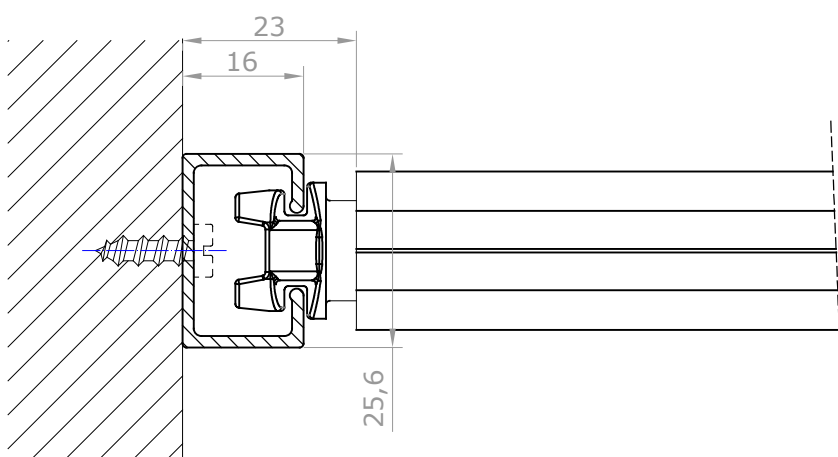
F. REVIS.		BANDALUX	
REVISION	1 2 3 4 5 6 7 8 9		
DATE	05-02-2018	PLAN N°	
DESSIN	Miquel P.	FORMAT	A-3
ECHELLE	Store enrouleur Premium Plus II moteur coulisses U-201 Installation: pose en façade, installation latérale Mécanisme: moteur 50 Barre de charge: Occulte de Ø20mm Tube Ø55mm		
1/1			



Détail 1:1 barre de charge occulte Ø30



Détail 1:1 barre de charge occulte Ø20



F. REVIS.		BANDALUX	
REVISION	123456789		
DATE	05-02-2018	PLAN N°	
DESSIN	Miquel P.	FORMAT	A-3
ECHELLE	Store enrouleur Premium Plus II moteur coulisses U-201 Installation: pose en façade, installation latérale Mécanisme: moteur 50 Barre de charge: Occulte de Ø20mm Tube Ø55mm		
1/1			